



**Labcare**  
de Colombia  
www.labcarecolombia.com



### **GLUE CLOSURE SPECIMEN TRANSPORT BAGS - NEW LOWER PRICING!**

The special glue closure of our specimen transport bags offer a liquid-tite tamper evident seal. Simply pull off the liner to expose the glue adhesive and press to close. Item #4923 features a 3" x 5" liquid absorbent pad.

- 2 mil gauge polyethylene (PE)
- Attached document compartment
- Glue closure tamper evident seal
- Imprinted with biohazard symbol

Item #	Description	Unit
4921	6" x 9" specimen transport bag, glue closure	1000
4923	6" x 9" specimen transport bag, glue closure, with absorbent pad	500

### **CARDBOARD STORAGE BOX FOR 5ML CENTRIFUGE TUBES**

- Designed these new cardboard boxes exclusively for 5mL centrifuge tubes
- Boxes are sold fully assembled and ready for use
- Each box has a liquid resistant coating
- Suitable for use in refrigerator and freezer systems
- Temperature range: -196° to +121° C

Dimensions: 134 x 134 x 76mm (5.2" x 5.2" x 3")

Item #	Description	Units
3097	36 place (6x6), white, for 5mL centrifuge tubes	Ea & 48

*Ask about . . .*

## **Diamond® Midi™ 5mL Centrifuge Tubes**

*The efficient and economic alternative to 15mL conical tubes when working with sample volumes between 2.0mL and 5.0mL.*



## **STERILE NASOPHARYNGEAL SAMPLE COLLECTION SWAB**

This 6" long nasopharyngeal sample collection swab is designed for the collection of nasal secretions from the back of the nose and throat. This sample collection method is commonly used for the detection of whooping cough, diphtheria, influenza, and various types of diseases caused by the coronavirus family of viruses, including SARS, MERS, and COVID-19.

### **Features:**

- Innovative design ideal for nasopharyngeal sample collection
- 80mm breakpoint design for convenient point-of-care use
- Flexible handle for patient comfort
- Absorbent nylon flocking ensures high sampling rate
- Rapid and complete release of cells during processing
- Enhanced sensitivity of diagnosis
- RNase, DNase free

### **Specifications:**

- Head material: Flocked nylon
- Handle material: Flexible polystyrene (PS)
- Total length: 150 mm, 6"
- Breakpoint distance: 80 mm from tip
- Sterile and individually wrapped

Item #	Description	Unit
SWBFT01	6", flocked thin nylon tip, nasopharyngeal swab, 80mm break point, STERILE, individually wrapped, 500/bag	500

Break point at 80mm from swab tip



Supplied in individually packaged peel-apart wrappers

Nylon flocking for superior sample collection



## **5ML AND 10ML STERILE TRANSPORT TUBES**

- Sterile
- Tubes are manufactured from virgin polypropylene (PP)
- Screw caps are polyethylene (PE)
- Designed for the safe storage and transport of biological materials
- Transparent tubes allow unobstructed viewing of samples
- Shatter-proof; may be exposed to freezing temperatures
- 2-1/4 turn thread design for super fast opening and closing
- Self-standing with conical bottom (5mL) or round bottom (10mL)
- Printed graduations
- White writing surface

### **5mL Polypropylene**

- Tube dimensions: 17 x 60mm

Item #	Description	Unit
6104SP	5mL transport tube with attached white screw cap, self-standing, printed graduations, PP, sterile, 25/Bag, 20 Bags/Case	500

### **10mL Polypropylene**

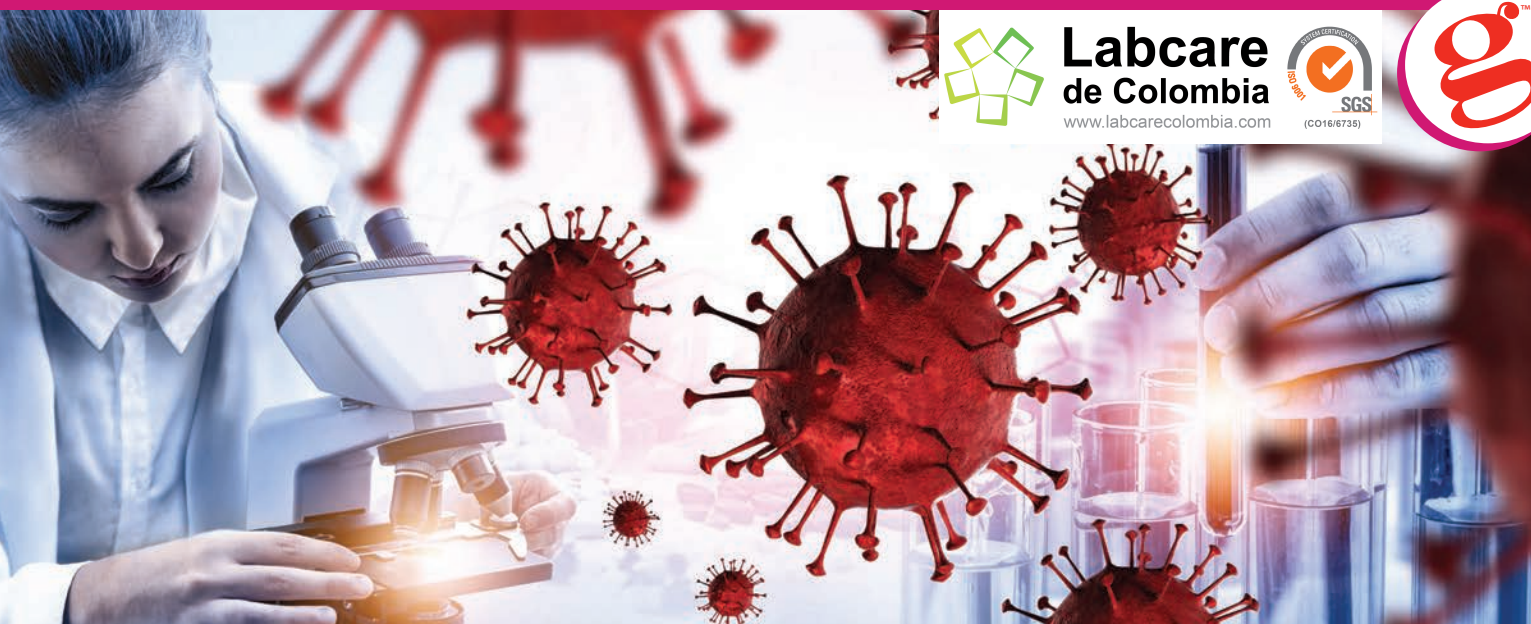
- Tube dimensions: 16 x 80mm

Item #	Description	Unit
6105SP	10mL transport tube with attached white screw cap, self-standing, printed graduations, PP, sterile, 25/Bag, 20 Bags/Case	500



**Labcare  
de Colombia**  
www.labcarecolombia.com





**Labcare  
de Colombia**  
www.labcarecolombia.com



## We're **HERE** to help . . .

In an effort to provide our customers with critical supplies in the fight against the COVID-19 pandemic, we are currently offering these special order items. These products are being offered on a temporary basis in response to customer requests and market demand. Please note that availability may be limited, stock cannot be guaranteed, and some items may be available by special order only and with longer lead times.

Please ask your Globe Sales Representative for up to the minute information, current availability and pricing.

Item #	Description	Unit
<b>Cryogenic Tubes</b>		
V-3015T	Cryogenic vial, 5.0mL, STERILE, external threads, attached screw cap, self standing, bulk	500
<b>Centrifuge Tubes</b>		
V-6285KG	Centrifuge tube, 15mL, attached blue flat top screw cap, PP, white printed graduations, STERILE, 25/bag	500
V-6285P	Centrifuge tube, 15mL, attached plug seal cap, PP, printed graduations, STERILE, 50/bag	1000
<b>Transport Tubes</b>		
6102S-R	Transport tube, 16 x 101mm, separate red screwcap, PP, STERILE, self-standing, 200 tubes/bag, 1000 caps/case	1000
6102S-H	Transport tube, 10mL, separate red screwcap, STERILE, self-standing, bulk	2000
V-6101PS	Transport tube, 5mL, PP, with white screw cap, flat bottom, STERILE, 50/bag, 20 bags/case	1000
V-6102PS	Transport tube, 10mL, PP, with white screw cap, flat bottom, STERILE, 200/bag, 10 bags/case	2000